

HWR40/68/96A-D

Item # _____

Project: _____

Qty: _____

*AutoCad available on KCL

WORKTOP REFRIGERATORS WITH DRAWERS

TEMPGUARD® Self-Contained Worktop Refrigerators with EverCheck® Controls

HWR40/68/96A-D

5/08

Item # 13189

HWR40A-D DIMENSIONS

W x D x H

40.25 x 32.3 x 39.9*

*with 6" casters

HWR68A-D DIMENSIONS

W x D x H

68 x 32.3 x 39.9*

*with 6" casters

HWR96A-D DIMENSIONS

W x D x H

95.8 x 32.3 x 39.9*

*with 6" casters



HWR40A-D

Shown



HWR68A-D

Shown



HWR96A-D

Shown

- Stainless steel interior and exterior top, front, sides and bottom with galvanized steel back for long life, durability and easy maintenance
- Cabinet drawer perimeter heater provides condensation control in high humidity environments and is equipped with a back-up should the primary heater fail
- Cabinet and drawer mullion are insulated with 2 3/8" CFC free, foamed-in-place polyurethane
- Each drawer accommodates (2) 12" x 20" x 6" deep pans (pans not included) and features full extension drawer slides
- Drawer fronts are constructed of high-grade 300 series stainless steel inside and out
- The drawer module frame and drawer slides are constructed of 14 gauge stainless steel for superior durability
- Snap-in magnetic drawer gaskets are durable and easily removed for cleaning
- Delrin rollers, used in combination with the stainless steel slides provide for smooth, quiet drawer operation without metal to metal contact
- Drawers have a 250 lb. dynamic load rating
- 6" heavy duty casters (2 with brakes) are standard
- High-efficiency refrigeration system is designed with a large capacity condenser and evaporator resulting in lower overall power consumption.
- TempGuard's® EverCheck® controls monitor high and low temperatures, high pressure, clean filter and cabinet temperature functions and provide visual alarms to alert operator to possible problems
- Cartridge-style refrigeration system is easily removable from the main unit for ease of service
- Evaporator coil is coated for extended life
- Refrigeration system is equipped with solid state digital controls (Fahrenheit or Celsius display)
- Refrigeration system is designed to maintain proper temperatures with "zero" clearance on ends and at rear
- Defrost cycles are temperature initiated - temperature terminated to prevent ice formation and maintain optimum cabinet temperatures
- Removable, cleanable air filter protects condenser and reduces cleaning requirements
- Hot gas condensate evaporator is standard
- Units equipped with 8' - 6" cord and plug
- Refrigerant: R-134A with capillary tube controls



Warranty

Valid in United States, Canada, Puerto Rico, & U.S. Territories. Contact factory for warranty in other countries.

Two Year - Parts & Labor on entire machine

Five Year - Parts on: Compressor



DIMENSIONS
W x D x H

HWR40A-D
40.25 x 32.3 x 39.9*

HWR68A-D
68 x 32.3 x 39.9*

HWR96A-D
95.8 x 32.3 x 39.9*
*with 6" casters

WORKTOP REFRIGERATORS

- 1 section worktop refrigerator
- 2 section worktop refrigerator
- 3 section worktop refrigerator

DIMENSIONS/CAPACITY

Model #	HWR40A-D	HWR68A-D	HWR96A-D
Interior Storage Capacity (CF)	8.5 ft ³	18.8 ft ³	29.1 ft ³
Overall Width	40.25"	68"	95.8"
Overall Depth	32.3"	32.3"	32.3"
Height (including 6" casters)	39.9"	39.9"	39.9"
Drawer Fully Open	58.1"	58.1"	58.1"
Door Opening Width	N/A	N/A	N/A
Drawer Height	9.9"	9.9"	9.9"
Adjustable Shelves	N/A	N/A	N/A
Shelf Dimensions (W x D)	N/A	N/A	N/A
Crated Shipping Weight	375 lb	554 lb	672 lb
Crated Height	40.5"	40.5"	40.5"
Crated Width	44.25"	72"	99.8"
Crated Depth	35.5"	35.5"	35.5"

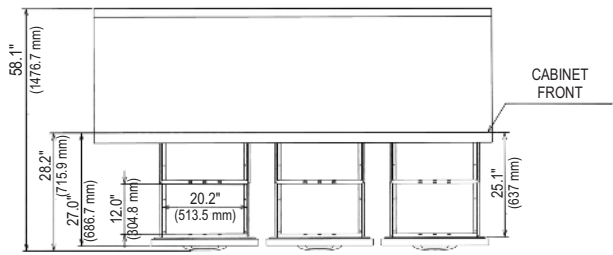
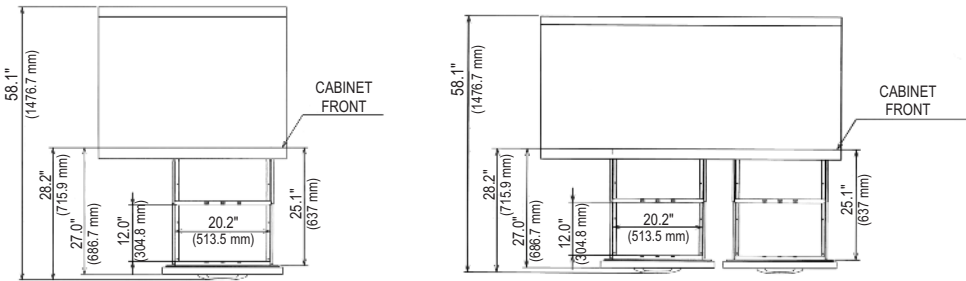
ELECTRICAL & REFRIGERATION DATA

Model #	HWR40A-D	HWR68A-D	HWR96A-D
Voltage	115/60/1	115/60/1	115/60/1
Amperage	5.0	5.0	6.0
HACR Breaker	15.0	15.0	15.0
Electrical Connection (NEMA)	5 - 15P	5 - 15P	5 - 15P
*Energy Consumption (kwh/day)	3.2	4.9	6.0
* Heat Rejection (BTU/Hr.)	449	695	852
Approximate Nominal Compressor BTU/Hr.(HP)	1442 (1/5HP)	1442 (1/5HP)	2010 (1/4HP)
Voltage Range	104 - 126	104 - 126	104 - 126
Ambient Temp. Range	45° - 100°F	45° - 100°F	45° - 100°F
Control Setpoint Range	21° to 53°F	21° to 53°F	21° to 53°F
*Refrigerant	R-134A	R-134A	R-134A

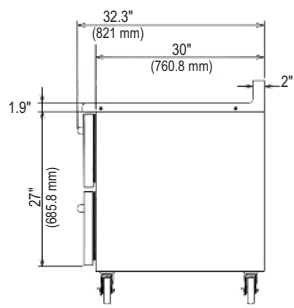
* Based on 100°F ambient cycling at setpoint

OPTIONS

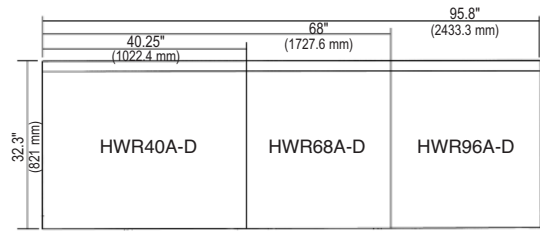
- 6" Legs
- Additional epoxy shelves
- Drawers (two high, two 6" deep 12" x 20" pans/drawer)
- Stainless steel back
- Bull nose top (front & rear)
- Tray pan rack slides (accommodates 18" x 26" pans)
- Reversible hinging (factory modification)
- Foot pedal



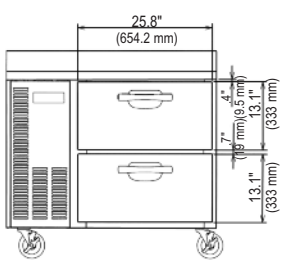
TOP VIEW



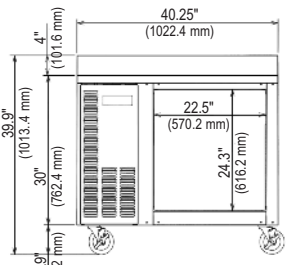
SIDE VIEW (ALL UNITS)



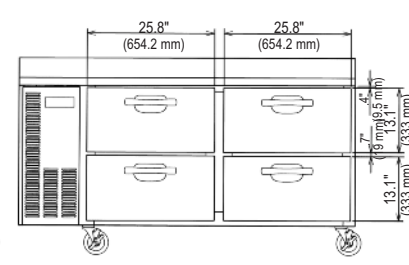
PLAN VIEW (ALL UNITS)



HWR40A-D



HWR68A-D



HWR96A-D

