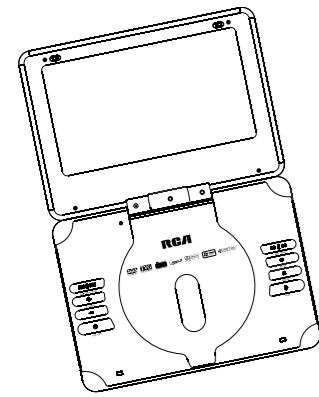




user manual
manual de usuario

DRC628



ENE

It is important to read this instruction prior to using your new product for the first time. Es importante leer este manual antes de usar por vez primera su equipo.

Power and connections

Connecting power adapter

- Connect the AC/DC or car power adapter to the power jack of the player.
- Connect the other side of the power adapter with the wall plug or car power plug.
- Turn on the power.
- Disconnect the adapter if the set is not used for a period of time.

External connections

This player can output sound and picture to external devices. To do so, slide the Function Switch on the left side of the player to the DVD position. Always switch off the player before connecting any devices.

- Connect the black connector of the AV cable to the AV OUT jack of the player.

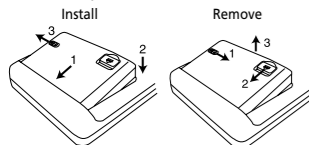


- Connect the yellow (for video), red and white (for audio) connectors to the AV input jacks of the external device.

- For better sound output quality, connect a coaxial digital output cable (provided) to the DIGITAL AUDIO OUT jack of the player and connect to the external device.

Using the battery

Follow the illustrations below to install or remove the battery on the back of the player. Secure the battery with the lock and unlock slide on the battery.



Charging the battery

- When the battery is low, the power/low battery indicator is red (instead of green). Connect the power adapter to the power jack of the player.
- Turn off the power to start charging.
- The battery charging indicator is red when charging and will turn green when the battery is fully charged.
- The battery cannot be charged while the player is being used.

NOTE: The RBRC seal on the rechargeable battery used in your Thomson Inc product indicates that we are participating in a program to collect and recycle rechargeable batteries. For more information, go to the RBRC web site at www.rbrc.org, or call 1-800-822-8837, or contact a local recycling center.

More information

DVD regional code

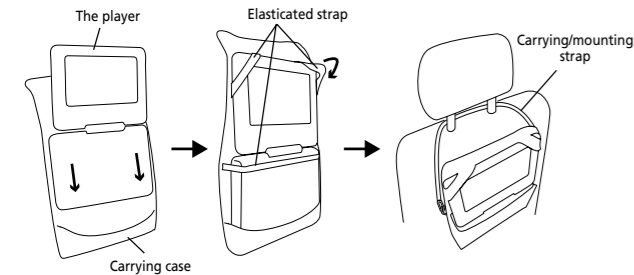
Your DVD player has been designed to process regional management information that is stored on DVD discs. The regional code for your player is 1 (The U.S., U.S. Territories and Canada). Only DVD discs that have regional codes of 1 or ALL (for all regions) can be played by your player.

DVD copy protection

This product incorporates copyright protection technology that is protected by U.S. patents and other intellectual property rights. Use of this copyright protection technology must be authorized by Macrovision Corporation, and is intended for home and other limited consumer uses only unless otherwise authorized by Macrovision. Reverse engineering or disassembly is prohibited.

Car mounting

You can easily mount the player on the back of a car seat with the help of the carrying case. See illustration below:



Safety information

FCC information

This device complies with Part 15 of the FCC Rules. Operation is subject to the following two conditions: (1) This device may not cause harmful interference, and (2) this device must accept any interference received, including interference that may cause undesired operation.

In accordance with FCC requirements, changes or modifications not expressly approved by Thomson Inc. could void the user's authority to operate this product. This device generates and uses radio frequency (RF) energy, and if not installed and used properly, this equipment may cause interference to radio and television reception.

If this equipment does cause interference to radio or television reception (which you can determine by turning the equipment off and on), try to correct the interference by one or more of the following measures:

- Reorient the receiving antenna (that is, the antenna for the radio or television that is "receiving" the interference).
- Move the unit away from the equipment that is receiving interference.
- Plug the unit into a different wall outlet so that the unit and the equipment receiving interference are on different branch circuits.

If these measures do not eliminate the interference, please consult your dealer or an experienced radio/television technician for additional suggestions. Also, the Federal Communications Commission has prepared a helpful booklet, "How To Identify and Resolve Radio TV Interference Problems." This booklet is available from the U.S. Government Printing Office, Washington, DC 20402. Please specify stock number 004-000-00345-4 when ordering copies. This product complies with DHHS Rules 21 CFR Subchapter J. Applicable at the date of manufacture.

For your safety

Main plug is used as the disconnect device, it shall remain readily operable and should not be obstructed during intended use. To be completely disconnected the apparatus from supply mains, the main plug of the apparatus shall be disconnected from the mains socket outlet completely.

This power unit is intended to be correctly oriented in a vertical or floor mount position.



WARNING: TO PREVENT FIRE OR ELECTRICAL SHOCK HAZARD, DO NOT EXPOSE THIS PRODUCT TO RAIN OR MOISTURE.

English

Precautions

General precautions

- Water and Moisture - Do not use this product near water for example, near a bathtub, wash bowl, kitchen sink, or laundry tub; in a wet basement; or near a swimming pool; and the like. Do not spill liquids on your Portable DVD or its components as they may touch dangerous voltage points or short-out parts that could result in a fire or electric shock. To clean your Portable DVD use a soft slightly damp cloth. Always allow all the components to dry completely before using again.
- Cleaning - Unplug this product from the wall outlet before cleaning. Do not use liquid cleaners or aerosol cleaners. Use a damp cloth for cleaning.
- Heat - The product should be placed away from heat sources such as radiators, heat registers, stoves, or other products (including amplifiers) that produce heat. Do not expose the Portable DVD or any of its components to extreme heat or cold. Do not expose the player to direct sunlight.
- Attachments - Do not use attachments not recommended by the product manufacturer as they may cause hazards.
- Servicing - Do not attempt to service this product yourself as opening or removing covers may expose you to dangerous voltage or other hazards. Refer all servicing to qualified service personnel.
- AC/DC power adapter cords should be routed so that they are not likely to be walked on or pinched by items placed upon or against them, paying particular attention to cords at plugs, convenience receptacles, and the point where they exit from the product.
- Power Sources - This product should be operated only from the type of power source indicated on the marking label. If you are not sure of the type of power supply to your home, consult your product dealer or local power company. Do not use any battery other than the original ones provided by Thomson.

Precautions when watching

- When using your Portable DVD player do not sit or stand too close to the screen.

Have a Blast-Just Not in your eardrums!

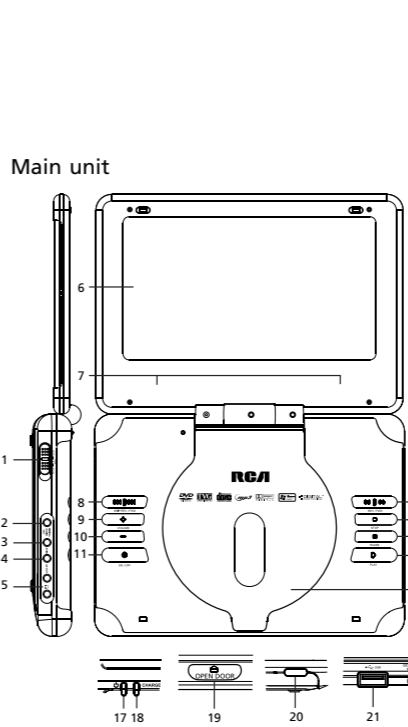
Make sure you turn down the volume on the unit before you put on headphones. Increase the volume to the desired level only after headphone are in place.



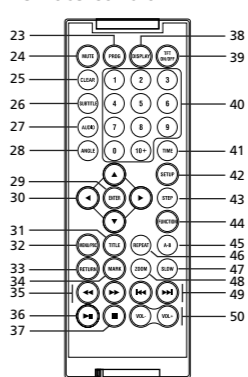
The descriptions and characteristics in this owner's manual are for the purpose of general reference only and not as a guarantee. In order to provide you with the highest quality product, we may make changes or modifications without prior notice. The English version serves as the final reference on all product and operational details should any discrepancies arise in other languages.

General Controls

Main unit



Remote control



DVD playback

DVD playback

Quick start

- Press **ON/OFF** on the player to switch it on.
- Press **OPEN DOOR** to open the disc compartment door. Place a disc in the tray with the printed side up. Push back the compartment door. The player will automatically try to read and play the disc. If a menu appears, one of its options can be selected to start playing the disc. Select it using **▲▼◀▶** keys and then press **ENTER**.
- To stop playback, press **■**. The player stores the point where playback was interrupted. If you press **■** again, playback resumes from this point. To stop playback completely or to start from the beginning, press **■** twice.

Accelerated playback

During playback, press **▶▶▶▶** one or more times to vary the speed and direction of the accelerated playback. Press **▶▶** to resume the normal playback.

Still image

During playback, press **■** once to freeze frame.

Frame advance

Press **STEP** (remote control) to activate STEP mode. Each press of **STEP** will advance forward image by image. Press **■** to resume the normal playback.

Slow motion

During playback, press **SLOW** (remote control) one or more times to vary the speed and direction of the slow motion playback. Press **■** to resume normal playback.

Changing chapter/track

During playback, press **▶▶▶▶▶▶** to go to the previous or next chapter/track.

Troubleshooting tips

The unit is not working.

- Turn off the power, and then turn it on again.
- Make sure power cord or battery is properly connected and battery is not empty.
- The unit cannot operate when the car adaptor power supply voltage is above 16V.

There is no sound or picture.

- Check the connection to the mains socket or battery.
- Make sure the power switch is on.
- Make sure the power outlet is operational.
- Make sure the power cord is not damaged.
- Make sure the volume is not set too low.

There is no sound or sound quality is poor.

- Make sure the audio jacks are securely connected.
- Make sure the audio connector is not damaged.
- Make sure the volume is turned up.
- Make sure you have set the player's audio settings correctly.
- Make sure you have entered the correct AV input for your TV.
- Make sure the audio is not set to mute.

There is no picture or picture quality is poor.

- Make sure that the Function Switch is on the proper position.
- Make sure the video jacks are securely connected.
- Make sure you have entered the correct AV input for your TV.
- Make sure the video connector is not damaged.
- Make sure you have set the player's video settings correctly.
- Make sure the battery level is not low.

Repeat playback

During playback, press **REPEAT** (remote control) repeatedly to select repeating a chapter, a title (DVD discs), all items on the disc or cancelling the repeat playback function.

A-B repeat

During playback, press **A-B** (remote control) once at the start and press **A-B** again at the end of a desired repeat section. The section will repeat continuously until you press **A-B** to resume normal playback.

Zoom

During playback, press **zoom** (remote control) repeatedly to select a zoom in or out option to enlarge or reduce the image size. Press **▲▼◀▶** to view other parts of the enlarged image.

Searching

Press **TIME** (remote control) to show the search menu on the screen. For DVD, you can direct access to a title, chapter, title time, chapter time on the disc by pressing **▲▼** to scroll to the current title, chapter, title time or chapter time and then press **ENTER**. Press the desired values with the numeric input keys on the remote control to access directly to the desired title, chapter or time.

You may also select **TIME** during DVD playback to view the current audio, subtitle, angle, repeat and time display settings by pressing **▲▼**. If necessary, press **ENTER** to change the current settings.

Accessing disc menu

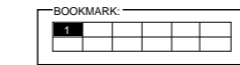
At anytime during playback, press **MENU/PBC** (remote control) to access DVD's menu. Press **TITLE** to access DVD's title menu (if available).

DVD playback

Bookmark

12 disc locations can be stored as long as the disc remains in the player and the player remains powered on. Press **MARK** (remote control) to show or hide the bookmark menu. The program will be erased when the disc is unloaded or the player is powered off.

- Press **▲▼◀▶** to select a free bookmark and then press **ENTER** to create a bookmark at the point you press **ENTER**.
- Repeat step 1 to create more bookmarks.
- Press **▲▼◀▶** to select a created bookmark and then press **▶▶** to start playback of the selected bookmark.
- Press **▲▼◀▶** to select an unwanted bookmark and then press **CLEAR** to clear the unwanted bookmark.



Playback information

Press **DISPLAY** (remote control) repeatedly during playback to show various playback information on the screen. They include current title and chapter and playback time.

Audio and subtitle settings

Press **AUDIO** (for audio) or **SUBTITLE** (for subtitle) on the remote control repeatedly for corresponding setting.

Tips: For VCD playback, press **AUDIO** for audio channel selection: mono left, mono right, mix mono or stereo. Press **MENU/PBC** repeatedly to select PBC mode (if available on the disc) on or off.

Angle setting

Press **ANGLE** (remote control) repeatedly to select angle settings (if available on the DVD disc).

U.S. Limited Warranty

What your warranty covers:

- Defects in materials or workmanship.
- Products purchased or serviced outside the USA.
- Acts of nature, such as but not limited to lightning damage.

For how long after your purchase:

- 90 days from date of purchase - unit exchange, which includes parts and labor.
- 91 days to 1 year from date of purchase - unit exchange, which includes parts only; you pay the labor.

What we will do:

- Provide you with a new, or at our option, a refurbished unit. The exchange unit is under warranty for the remainder of the original product's warranty period.
- Proof of purchase in the form of a bill of sale or receipted invoice which is evidence that the product is within the warranty period must be presented to obtain warranty service. For rental firms, proof of first rental is also required.

How to make a warranty claim:

- Properly pack your unit. Include any cables, etc., which were originally provided with the product. We recommend using the original carton and packing materials.
- Include evidence of purchase date such as the bill of sale. Also print your name and address and a description of the defect. Send via standard UPS or its equivalent to: Thomson Inc., Product Exchange Center, 11721 B Alameda Avenue, Socorro, Texas 79927

Remote control is not working

- Battery may be empty.
- Make sure you are pointing to the remote sensor on the player while using.

You have forgotten your rating password.

- Enter 9688 in the password menu to clear the memory. Keep this master password out of the reach of children. Refer to "Player Setup" for details.

What your warranty does not cover:

- Customer installation. (Your Owner's Manual provides information regarding operating instructions and user controls. For additional information, ask your dealer.)
- Installation and set-up service adjustments.
- Batteries.
- Damage from misuse or neglect.

General Controls

Remote control

- Function switch (DVD/USB/AV IN)
- Digital audio output jack
- AV input jack
- AV output jack
- Headphone jacks
- LCD display
- Speakers
- Skips backward or forward a chapter/track
- Increases the volume
- Decreases the volume

- Powers on or off the player
- Searches backward or forward
- Stops playback
- Pauses playback
- Starts playback
- Disc compartment door
- Mutes the sound output
- Battery charging indicator
- Opens the disc compartment door
- Remote control sensor

- USB connector
- Power jack
- Enters the program mode
- Mutes the sound output
- Clears input in menu
- Searches backward or forward
- Starts or pauses playback
- Stops playback
- Selects the display information
- Turns the LCD display on or off
- Numeric input keys

- Enters the title menu
- Enters the disc menu or VCD PBC menu
- Returns to the main menu
- Accesses the bookmark function
- Searches backward or forward
- Starts or pauses playback
- Stops playback
- Selects the display information
- Turns the LCD display on or off
- Numeric input keys

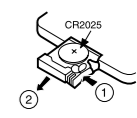
- Enters the search menu
- Enters the player's setup menu
- Enters the step advance mode
- Adjusts the screen's brightness, contrast and color saturation
- Enters A-B repeat mode
- Selects a repeat mode
- Enters the slow playback mode
- Enters the zoom mode
- Skips backward or forward a chapter/track
- Adjusts volume

Using the remote control

- Remove the plastic tab from the battery compartment before first use.
- To replace the battery, slide the release lock to the right and pull out the battery tray. (One button type, CR2025 battery required)
- When using the remote control, make sure you are pointing to the remote sensor located at the front of the player.

CAUTION

- Danger of explosion if battery is incorrectly installed.
- Replace only with the same or equivalent type of battery.



Accessories

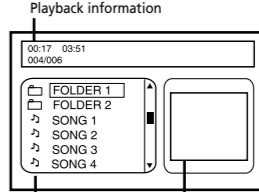
Check that all the following accessories come with your player in the package:

- Remote control x 1
- AV cable x 1
- Coaxial digital output cable x 1
- Lithium ion polymer battery x 1
- AC/DC power adapter x 1
- Car power adapter x 1
- Carrying case x 1
- Carrying/mounting strap x 1

Playback of other media formats

mp3, wma and jpeg files

Your player also supports playback of mp3, wma and jpeg files. During playback of mp3 and wma files and stop mode of jpeg files, the following screen appears:



- Use **▲▼◀▶** keys to navigate to different files or directories.
- Press **ENTER** to play the file highlighted.
- When viewing JPEG files, press **▲▼◀▶** keys will rotate or flip picture respectively.
- When listening to mp3 or wma files, press **TIME** and then input values with the numeric keys on the remote control to access directly to a specific file or time of a file.

Program playback (mp3 and WMA files)

- Use **▲▼◀▶** keys to select the file you want to add to the program list and then press **MARK** (remote control). Repeat this step to program more.
- Press **PROG** (remote control) to display the program list and press **▶▶** to start the program playback.
- To delete a file from the list, press **PROG**, use **▲▼◀▶** keys to select the file from the program list and press **MARK** to delete it.
- The entire program list will be deleted when **OPEN/CLOSE** is pressed.

U.S. Limited Warranty

What your warranty covers:

- Defects in materials or workmanship.
- Products purchased or serviced outside the USA.
- Acts of nature, such as but not limited to lightning damage.

For how long after your purchase:

- 90 days from date of purchase - unit exchange, which includes parts and labor.
- 91 days to 1 year from date of purchase - unit exchange, which includes parts only; you pay the labor.

What we will do:

- Provide you with a new, or at our option, a refurbished unit. The exchange unit is under warranty for the remainder of the original product's warranty period.
- Proof of purchase in the form of a bill of sale or receipted invoice which is evidence that the product is within the warranty period must be presented to obtain warranty service. For rental firms, proof of first rental is also required.

How to make a warranty claim:

- Properly pack your unit. Include any cables, etc., which were originally provided with the product. We recommend using the original carton and packing materials.
- Include evidence of purchase date such as the bill of sale. Also print your name and address and a description of the defect. Send via standard UPS or its equivalent to: Thomson Inc., Product Exchange Center, 11721 B Alameda Avenue, Socorro, Texas 79927

Remote control is not working

- Battery may be empty.
- Make sure you are pointing to the remote sensor on the player while using.

You have forgotten your rating password.

- Enter 9688 in the password menu to clear the memory. Keep this master password out of the reach of children. Refer to "Player Setup" for details.

What your warranty does not cover:

- Customer installation. (Your Owner's Manual provides information regarding operating instructions and user controls. For additional information, ask your dealer.)
- Installation and set-up service adjustments.
- Batteries.
- Damage from misuse or neglect.

How state law relates to this warranty:

- Some states do not allow the exclusion nor limitation of incidental or consequential damages, or limitations on how long an implied warranty lasts, so the above limitations or exclusions may not apply to you.

IMPORTER
Comercializadora Thomson de México, S.A. de C.V.
Alvaro Obregón No. 151, Piso 13.
Col. Roma, Delegación Cuauhtémoc
C.P. 06700, México, D.F.
Telefono: 52-55-11-020360
RFC: CTM-980723-K55

EXPORTER
Thomson Inc.
P.O. Box 1976
Indianapolis, IN 46206 - 1976
©2007 Thomson Inc.
Trademark(s) © Registered
Marca(s) © Depositado(s)
Marca(s) © Registrado(s)
www.rcaudiovide.com
Printed in China / Impreso en China