

FranklinChef®

Conveyor Toaster



Instruction Manual

FRANKLIN INDUSTRIES, L.L.C.

4100 First Avenue

Brooklyn, NY 11232-3321

Tel.: (866) 837-5277

Website: www.franklinchef.com

E-Mail: customerservice@franklinchef.com

Model FCC7000

IMPORTANT SAFEGUARDS

To avoid personal injury or death and to avoid damage to the equipment or property, read all instructions before using this appliance. Use this appliance only for its intended purpose as described in this instruction manual. Always exercise basic safety precautions, as described below. After reading the instruction manual, store it in an accessible place where the user(s) of this product can easily find it.

The purpose of these safety precautions is to ensure safe and correct use of the product to minimize risks that could cause serious damage and injury to you or others. The safety precautions are divided into the categories DANGER, WARNING and CAUTION. Cases where improper handling of the unit could lead to death or serious injury are listed under the DANGER heading. The WARNING heading indicates that failure to heed these safety statements may result in extensive product damage, serious personal injury, or death. Failure to heed the CAUTION statements could result in minor or moderate personal injury, or property or equipment damage. To ensure safety, adhere strictly to all three types of safety precautions.



1. To avoid any injury, turn the power switch OFF, unplug the unit from the power source and allow to cool before performing any maintenance.
2. For safety and proper operation, the unit must be located at a reasonable distance from combustible walls and materials. If safe distances are not maintained, discoloration or combustion could occur. Do not locate toaster under shelving or closer than 12" (305 mm) from the ceiling.
3. Allow a minimum of 1" (25 mm) along the sides. Allow a clearance of 12" (305 mm) along the front and rear discharge to insure proper operation and safety.
4. To prevent any injury or damage, do not pull the unit by the power cord.
5. To prevent any injury, discontinue use if power cord is frayed or worn.
6. This product has no user-serviceable parts. To avoid damage to the unit or injury to personnel, use only authorized Franklin service agents and genuine Franklin parts when service is required. If service is required on this unit, contact your authorized Franklin service center at (866) 837-5277.
7. Genuine Franklin service parts are specified to operate safely in the environments in which they are used. Some generic replacement parts do not have the characteristics that will allow them to operate safely in Franklin

equipment. It is essential to use Franklin replacement parts when repairing Franklin equipment. Failure to use Franklin replacement parts may subject operators of the equipment to hazardous electrical voltage, resulting in electrical shock or burn.



WARNING

1. To avoid any injury or damage, locate the unit at the proper counter height, in an area that is convenient for use. The location should be level to prevent the unit or its contents from accidentally falling, and strong enough to support the weight of the unit and food.
2. Do not place anything on top of the toaster; doing so could damage the toaster or subject personnel to possible injury.
3. The toasting of coated or buttered products such as garlic bread, cheese sandwiches and sweet rolls is NOT recommended. Residue will reduce toaster performance and could possibly ignite inside the toaster.
4. When setting up the unit for operation, make sure power to the unit is off and the toaster is at room temperature. Failure to do so could result in personal injury.
5. Some exterior surfaces on the unit will get hot. Use caution when touching these areas to avoid injury.
6. To avoid damage to the unit or injury to personnel, always operate toaster with crumb tray installed.
7. To avoid any injury, do not remove the crumb tray for cleaning until toaster is cool.
8. The unit is not weatherproof. For safe and proper operation, the unit must be located indoors where the ambient air temperature is a minimum of 70°F (21°C) and a maximum of 85°F (29°C).

CAUTION

1. Plug toaster into a properly grounded electrical outlet of the correct voltage, size and plug configuration. If the plug and receptacle do not match, contact a qualified electrician to determine the proper voltage and size, and install the proper electrical outlet.

2. Do not locate the toaster in an area subject to excessive temperatures or grease from grills, fryers, etc. Excessive temperatures could cause damage to the unit. Do not place toaster in an area that restricts air flow around the front or rear of the unit. Do not place toaster in direct discharge path of air conditioning vent or other air vent.
3. Use only non-abrasive cleaners. Abrasive cleaners could scratch the finish of the toaster, marring its appearance and making it susceptible to soil accumulation.

Table of Contents

<i>Important Safeguards</i>	1 - 3
<i>Technical Information</i>	3
<i>Location of Controls</i>	4
<i>Installation</i>	4 - 5
<i>Operation</i>	5
<i>Cleaning</i>	6
<i>Exploded Diagram</i>	7
<i>Parts List</i>	8
<i>Limited Warranty</i>	9

Technical Information

Model No.:	FCC7000
Electrical Input:	120VAC ~ 60Hz ~ 14.2A
Power Consumption:	1700W
Toasting Capacity:	400+ slices per hour
Unit Size, WxDxH:	16.5" x 20.9" x 18.4"
Unit Weight:	31.7 lbs

Location of Controls



Installation

1. After you have removed the toaster from the carton, inspect the unit for signs of damage. If there is damage, do not use the unit. Contact your authorized dealer.
2. Verify that all parts have been received. If there is a protective coating on the unit, remove it.
3. Attach the four legs to the toaster by screwing in each leg. These legs can be adjusted to level the toaster.
4. Install the toast tray by inserting its two tabs into the slots at the front of the slide plate. The toast tray has two side slots that fit over the mount pins near the front of the chamber. (See photo at right.)



5. Insert feed rack into top of crumb tray/reflector. Study the illustrations below to see the right and wrong ways to do this.



WRONG



WRONG



CORRECT

6. The toaster fan located on the bottom rear of the toaster draws in cool room air and circulates it through the toaster sides and top. To insure adequate heat dissipation, do not position the toaster where the fan would draw in hot discharge from another appliance.

Operation

1. Plug unit into the proper voltage receptacle.
2. Set Power switch to "I" for On.
3. Turn the Heat Setting dial to **ALL**.
4. Allow 20 minutes for toaster to warm up.
5. Lay bread slice on the feed rack and let it slide onto the conveyor chain.
6. To control the toast color, adjust the Toast Color dial to the preferred setting. (This controls the conveyor speed; the slower the conveyor, the darker the toast.)
7. Use the **UPPER** or **LOWER** Heat Settings to toast items such as sliced bagels or thick-sliced French bread that are to be toasted on only one side (the cut side). When the side facing up needs toasting, use the **UPPER** setting; alternately, use the **LOWER** setting when you want to toast the side facing down.

NOTE 1: Turn the Heat Setting dial to **UPPER** or **LOWER** if you will not be toasting for a short period of time and need to keep the unit warm for quicker heat-up later. Some of the heating elements are switched off to save power. Turn the Heat Setting dial back to **ALL** and allow the unit to warm up for 5 minutes when you need to toast again.

NOTE 2: This unit allows for the toasting of bread products up to 1½" high and 9½" long, such as French bread.

IMPORTANT: The toasting of coated or buttered products such as garlic bread, cheese sandwiches and sweet rolls is NOT recommended. Residue will restrict toaster performance and could possibly ignite inside the toaster.

To minimize flare-ups, empty the crumb tray daily, and even more frequently when usage is heavy.

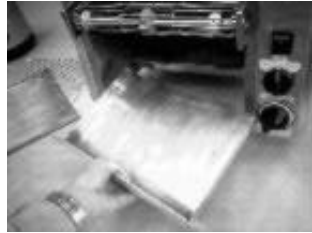
Cleaning

CAUTION: This appliance is not waterproof, and should not be cleaned with a water hose or jet spray. DO NOT IMMERSE IN WATER.

1. Turn off the Power switch.
2. Allow unit to cool for 30 minutes before cleaning.
3. Unplug toaster.
4. Remove the crumb tray/reflector and clean it by wiping with a damp cloth. (See photo.) This should be done at least once a day.

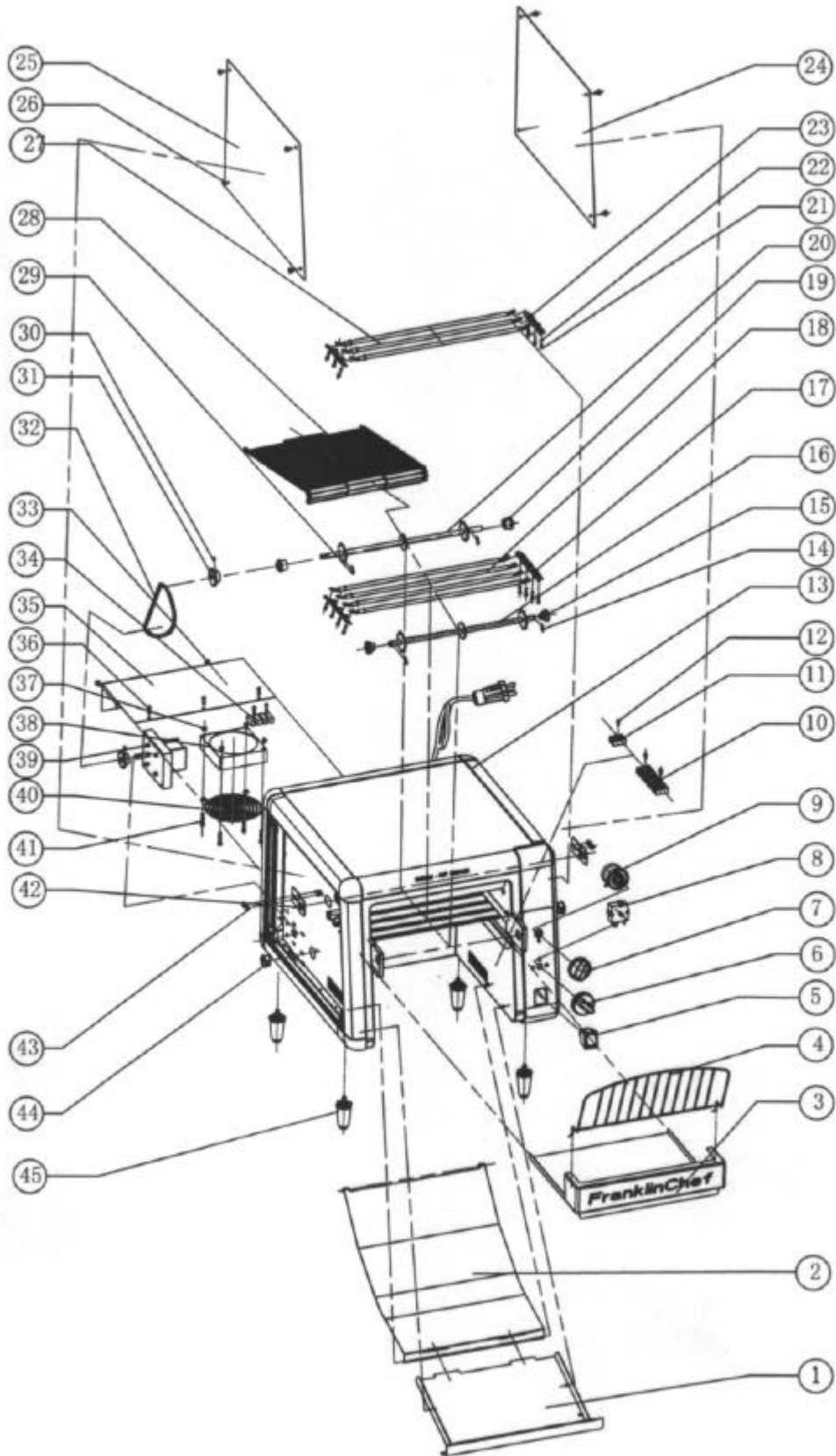


5. Remove the toast tray and clean it by wiping with a damp cloth. (See photo.)



6. Clean the exterior of the toaster by wiping it with a damp cloth.

Exploded Diagram



Parts List

ITEM NO	PART NUMBER	DESCRIPTION
1	20200-C1111	Crumb tray
2	20223-C1128	Slide plate
3	20200-C1126	Reflector
4	20210-C1131	Toasting net
5	69908-00764	Power switch
6	30200-C1163	Heater knob
7	30200-C1162	Motor knob
8	69908-00865	Heater switch
9	60402-01001	Adjust resistor
10	91402-C1178	Wire connector 1#
11	91402-C1179	Wire connector 2#
12	11727-30160	Screw
13	TLC11-US-FI-00	housing assembly
14	137001-4808	Locking washer
15	32600-C1148	Subordinate bearing
16	20228-C1143	Subordinate axis assembly
17	20200-C1169	Wire connector plate 2#
18	60302-C1167	Bottom heating element
19	32600-C1146	Bearing
20	20228-C1140	axis assembly
21	11726-40080	Screw
22	131903-4210	Spring washer
23	20200-C1168	Wire connector plate 1#
24	20223-C1106	Left plate
25	20223-C1107	Right plate
26	11748-40080	Hexagon Screw
27	60302-C1166	Top heating element
28	20200-C1151	Conveyor
29	137210-8008	Locking washer
30	11047-40060	Screw
31	21908-C1138	Gear
32	21300-C1139	Chain
33	11748-40080	Hexagon Screw
34	91402-C1179	Wire connector 3#
35	20223-C1129	Motor cover
36	11736-35070	Screw
37	12201-04032	Nut
38	69901-06034	Fan
39	60501-12036	Motor
40	20210-C1135	Fan net
41	11749-40350	Screw
42	20200-C1150	Adjust frame
43	12201-03527	Nut
44	30201-C1196	Wire casing
45	30201-C1111	Foot Assembly

Limited Warranty

Franklin Industries, L.L.C., warrants this product to be free from defects in materials and workmanship for a period of one year from the date of the original purchase or delivery. Any parts that are determined to be defective will be replaced or repaired, at its sole discretion, by Franklin at no charge as long as it has been determined that the unit was operated in accordance with the instructions attached or furnished with the product. If the unit proves to be defective, your first course of action should be to follow the retailer's return policy.

This warranty covers units only in the continental United States and does not cover the following:

- Damage from improper voltage or installation
- Damage in shipping
- Defects other than manufacturing defects
- Any installation expenses that may be incurred
- Labor or repairs after the initial 12-month period
- Damage from abuse, misuse, accident, alteration or lack of proper care or maintenance
- Improper or incorrectly performed maintenance or repairs
- Use of parts not recommended by Franklin Industries
- Damage due to acts of God.

This limited warranty is given in lieu of all other warranties expressed or implied. This warranty does not cover incidental or consequential damages. Some States do not allow the exclusion or limitation of incidental or consequential damages, so the above limitation or exclusion may not apply to you.

This warranty provides you with specific legal rights and you may have other rights which vary from State to State. Consult the written materials accompanying your product for the safe and proper operation.

This warranty may not be assigned.

For warranty service, contact:

Franklin Industries, L.L.C.

4100 First Avenue

Brooklyn, NY 11232-3321

Tel. : 1-866-837-5277

Website: www.franklinchef.com

When service is required, have on hand the Model and Serial numbers found on the rating label on the back of the unit, as well as proof of purchase such as a sales or gift receipt.

