

CAMBRIA

Spring Base Lounge Chair



Item Number: #17135-SB
Cushion: #135 (Seat, Back & Arms)
Material: Wrought Iron
Dimensions: W34.75" D35" H41.5"
Seat Cushion: W25" D25" H6"
Back Cushion: W32" D8" H24"
Arm Cushions: W6.5" D20.5" H10.5"
Arm Height: 26.5"
Seat Height: 18"
Weight: 52 lbs.
Warranty: Limited 5 Year Structural (frame)
(Commercial) Limited 3 Year Finish
Limited 1 Year Cushion
Limited 1 year Component Parts

Features: -3/4" Rd. Galvanized Steel Tube Frame
-Barrel Back Design
-Decorative Tufted Back & Arms Cushions
-Velcro Tabs Keep Cushions Attached
-PlushComfort™ Seat Cushion
-DuPont Delrin Glides (COM0101A)

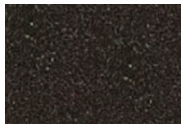
COM Yardage: Seat, Back & Arm Cushions - 3.5 yards
**Based on 54" wide plain fabric w/ no repeat railroad, or centering. Contact sales@owlee.com for custom fabric quote.*



Finishes:



PG20: Coastal Grey



SP21: Graphite



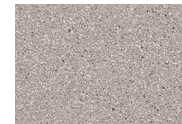
SP08: Textured Black



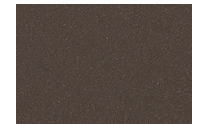
TC75: Oxford White



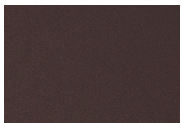
SW40: Driftwood



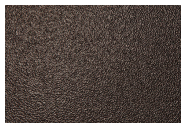
TC20: Sandalwood



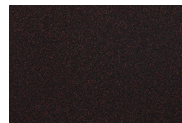
SP18: Dark Bronze



PG50: Metallic Cinnamon



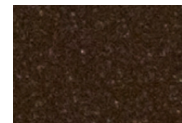
SP40: Copper Canyon



SP11: Rosewood



SP42: Espresso



SP22: Sable



TG10: Terra Antigua

