

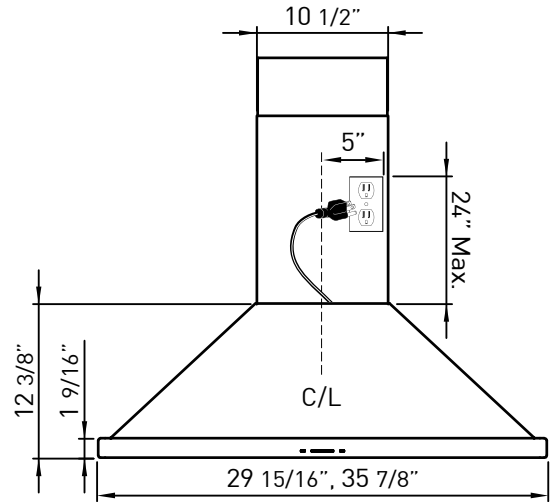
Siena is packed with power. With a 650-CFM blower and ACT™ technology this is a hood with a versatile range of features perfect for any kitchen. With updated dual-level BriteStrip™ LED lighting, a recirculating option

and Zephyr's ICON Touch® controls, clearing the air is as simple as the touch of a button.

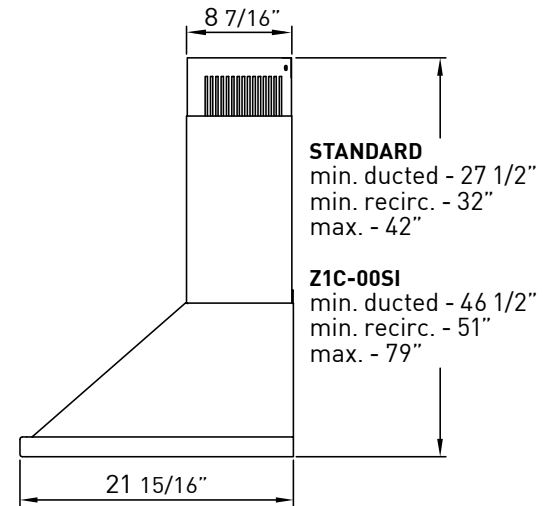
ACT™

| Min. - Max. CFM | INTERNAL BLOWER STANDARD | INTERNAL BLOWER with ACT™ AIRFLOW CONTROL TECHNOLOGY™* | |
|-------------------|--------------------------|--|-----------|
| | 200 - 650 | 200 - 390 | 200 - 290 |
| Min. - Max. Sones | 1 - 6 | 1 - 4 | 1 - 3 |

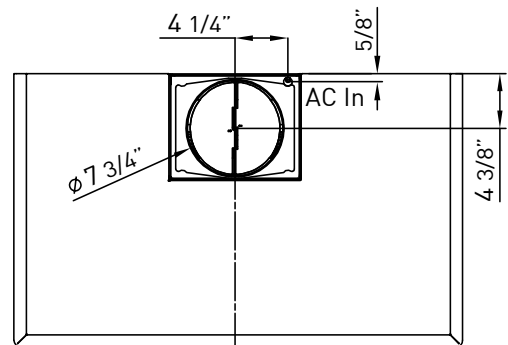
*AIRFLOW CONTROL TECHNOLOGY™ (ACT™) is an exclusive feature built into specific Zephyr hoods which can limit the maximum blower CFM to meet local code requirements.



FRONT



SIDE



C/L

TOP

| MODEL | ZSI-E30BS | ZSI-E36BS |
|--------------------------------|-----------------------------|-----------------------------|
| Stainless Steel | | |
| Size | 30" | 36" |
| Blower CFM (Min. - Max.) | 200 - 650 | 200 - 650 |
| Sones (Min. - Max.) | 1 - 6 | 1 - 6 |
| ACT 390 CFM (Min. - Max.) | 200 - 390 | 200 - 390 |
| ACT 390 Sones (Min. - Max.) | 1 - 4 | 1 - 4 |
| ACT 290 CFM (Min. - Max.) | 200 - 290 | 200 - 290 |
| ACT 290 Sones (Min. - Max.) | 1 - 3 | 1 - 3 |
| FEATURES | | |
| ACT™ Technology | Yes | Yes |
| Controls | ICON Touch® | ICON Touch® |
| Speed Levels | 5* | 5* |
| Auto Delay-Off | Yes | Yes |
| Lighting | BriteStrip™ LED, x1 | BriteStrip™ LED, x1 |
| Dual-Level Lighting | Yes | Yes |
| Filters | Hybrid Baffle x2 | Hybrid Baffle x2 |
| Recirculating Option | Yes | Yes |
| Extension Duct Cover Option | Yes, Up to 12' Ceiling | Yes, Up to 12' Ceiling |
| DUCT SPECIFICATIONS | | |
| Vertical Internal Blower | 8" Round | 8" Round |
| Horizontal Internal Blower | NA | NA |
| AC POWER | 120V, 60Hz at Max. 4A | 120V, 60Hz at Max. 4A |
| OPTIONAL ACCESSORIES | | |
| Recirculating Kit | ZRC-00SI | ZRC-00SI |
| Extension Duct Cover | Z1C-00SI | Z1C-00SI |
| Make-Up Air Kit | MUA008A | MUA008A |
| MOUNTING HEIGHT RANGE** | 26" - 34" | 26" - 34" |
| WARRANTY | 3 years parts, 1 year labor | 3 years parts, 1 year labor |

| CEILING HEIGHT | | 8' | 8.5' | 9' | 9.5' | 10' | 10.5' | 11' | 12' |
|----------------------|--------------------------|-------------|-----------|-----------|-------------|-----------|-----------|-----------|-----------|
| STANDARD DUCT COVER | Ducted Mounting Height** | 26" - 32.5" | 26" - 34" | 30" - 34" | NA | NA | NA | NA | NA |
| | Recirc Mounting Height** | 26" - 28" | 26" - 34" | 30" - 34" | NA | NA | NA | NA | NA |
| EXTENSION DUCT COVER | Ducted Mounting Height** | NA | NA | NA | 26" - 31.5" | 26" - 34" | 26" - 34" | 26" - 34" | 28" - 34" |
| | Recirc Mounting Height** | NA | NA | NA | 26" - 27" | 26" - 34" | 26" - 34" | 26" - 34" | 28" - 34" |

*When ACT™ is enabled the maximum speed levels will change. ACT 390 CFM = 4 speeds and ACT 290 CFM = 3 speeds.
 **Mounting height refers to distance between top of a 36" tall cooking surface and bottom of hood.

ACT™ AIRFLOW CONTROL TECHNOLOGY™ (ACT™) is an exclusive feature built into specific Zephyr hoods which can limit the maximum blower CFM to meet local code requirements.

Specifications subject to change, check zephyronline.com for up-to-date information.
 Zephyr Ventilation | 2277 Harbor Bay Parkway, Alameda, CA 94502 | 888.880.VENT

JUN17.0201

