

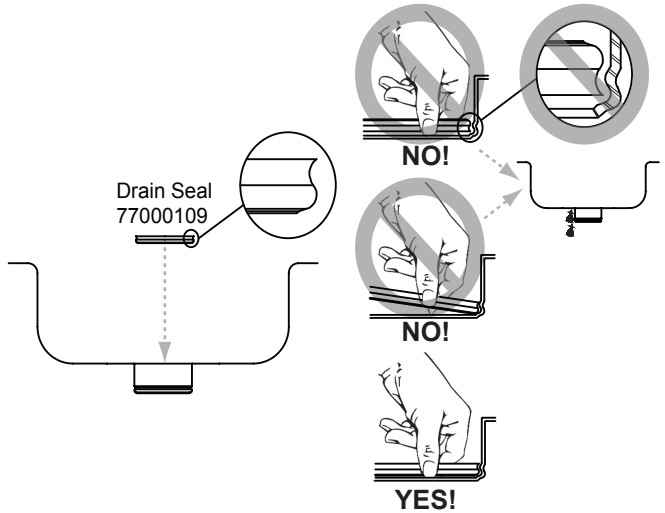
For all non-disposer installations.

For disposer applications follow the directions supplied with the disposer.

STEP 1

Install and properly seat **Drain Seal** within groove. Incorrect installation may allow leaks and void the warranty!

NO additional Sealant or Plumber's Putty is required.



STEP 2

Properly seat **Drain Body** into Perfect Drain.

Place **Gasket** over Perfect Drain.

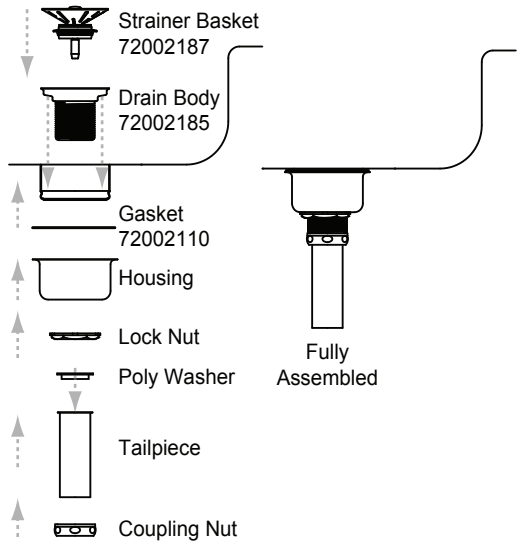
Install **Housing** over Perfect Drain.

Thread **Lock Nut** onto **Drain Body**.

Place **Poly Washer** on **Tailpiece**.

Install **Tailpiece Assembly** onto **Drain Body** with **Coupling Nut**.

Check for leaks and place **Strainer Basket** into **Drain Body**.



BE CAREFUL TO NOT OVER TIGHTEN THE FITTINGS.

In keeping with our policy of continuing product improvement, Elkay reserves the right to change product specifications without notice. Please visit elkayusa.com for most current version of Elkay product specification sheets.

This specification describes an Elkay product with design, quality, and functional benefits to the user. When making a comparison of others producers offerings, be certain these features are not overlooked.