

# CAMBRIA

## Club Swivel Counter Stool



Item Number: #17133-SCS  
Cushion: #133 (Seat, Back & Arms)  
Material: Wrought Iron  
Dimensions: W29.75" D28.75" H46"  
Seat Cushion: W20" D20" H4"  
Back Cushion: W23" D6" H21"  
Arm Cushions: W5" D17.25" H8.25" (x2)  
Arm Height: 34.25"  
Seat Height: 28"  
Weight: 39 lbs.  
Warranty: Limited 5 Year Structural (frame)  
(Commercial) Limited 3 Year Finish  
Limited 1 Year Cushion  
Limited 1 year Component Parts  
Features: -3/4" Rd. Galvanized Steel Tube Frame  
-Barrel Back Design  
-Decorative Tufted Back & Arms Cushions  
-Velcro Tabs Keep Cushions Attached  
-PlushComfort™ Seat Cushion  
-DuPont Delrin Glides (COM0101A)  
COM Yardage: Seat, Back & Arm Cushions - 2.25 yards  
*\*Based on 54" wide plain fabric w/ no repeat railroad, or centering. Contact sales@owlee.com for custom fabric quote.*



### Finishes:



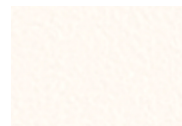
PG20: Coastal Grey



SP21: Graphite



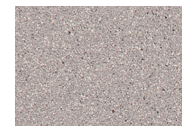
SP08: Textured Black



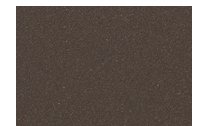
TC75: Oxford White



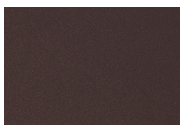
SW40: Driftwood



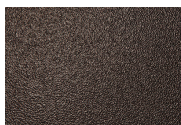
TC20: Sandalwood



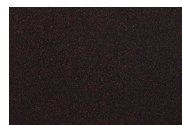
SP18: Dark Bronze



PG50: Metallic Cinnamon



SP40: Copper Canyon



SP11: Rosewood



SP42: Espresso



SP22: Sable



TG10: Terra Antigua

