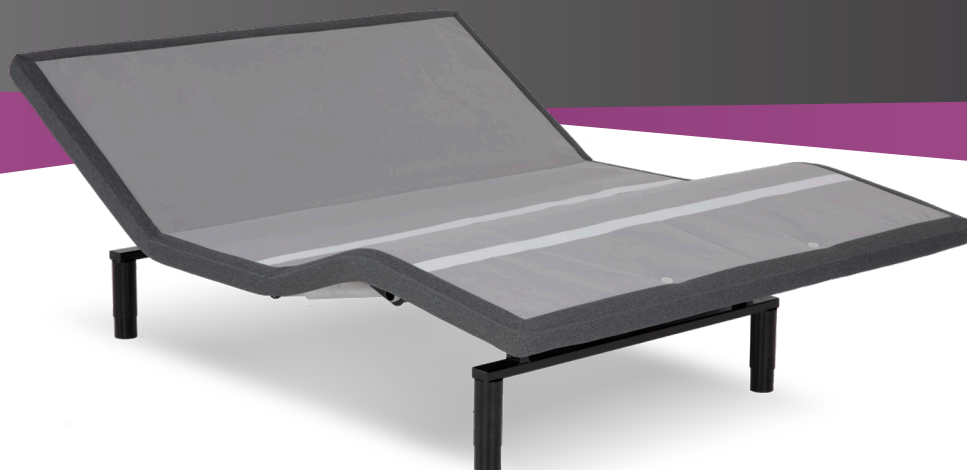


SIMPLICITY™ 3.0

performance
MODELS™



head and foot



dual massage



under-bed lighting



adjustable leg



optional app kit upgrade
sold separately

Slim 2"-Profile Base – Easily fits inside the frame of your bed.

Head and Foot Articulation – Effortlessly raise the head or foot to find ultimate comfort.

850-lb. Lift Capacity – This high-performance base easily lifts up to 850 lbs. total maximum weight, including mattress.

Back-Lit Wireless Remote with Safety Lock Feature – Place this freestanding remote on your nightstand for easy access and use the safety lock feature for peace of mind.

Full-Body Dual Massage with Wave – Rejuvenate after a long day with a relaxing head-to-toe massage that soothes your cares away.

Zero Gravity Button Plus Two Custom Programmable Positions – Relieve pressure points with weightless Zero Gravity or find personalized comfort by storing two of your favorite positions.

Flat Button – Easily return the base to flat with the touch of a button, or program with press-and-hold for safety.

Snore Button – Quickly elevate the head of the base 7° to open up airways.

Under-Bed Light – Under-bed lighting provides both ambience and functionality.

Adjustable Legs – Heavy-duty 2½"-diameter legs easily adjust from 6" to 10" for a perfect fit.

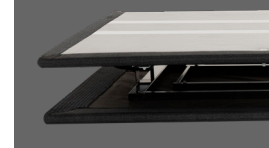
Power-Down – In the event power is lost, a battery backup returns the base to flat.

MicroHook™ – Our exclusive mattress retention system eliminates the need for a mattress retainer bar, providing a sleeker, more modern look.

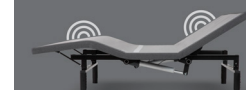
Wireless Syncing – No sync cable required for split sizes.

Available in the following sizes: Twin, Twin XL, Full, Full XL, Queen, Split Queen, Folding Queen, Folding Single King, Split California King, and Folding Single California King.

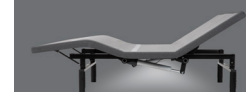
Foldable Models Available



Dual Massage with Wave



Under-Bed Light



DESIGNED, ENGINEERED
& ASSEMBLED



Adjustable Bases by

leggett & platt®

LPAdjustableBases.com

© 2018 Leggett & Platt Consumer Product Group, a division of Leggett & Platt Incorporated • ABLT1091W_23667_0518